



MAGNITE





Designed To Disrupt

You didn't get this far by standing still. After all, you are a game changer, driven to keep moving forward. You power your own progress, and you go your own way.

With bold styling, cutting edge technology and some of the best in-class safety and comfort features, the Nissan MAGNITE is the ultimate urban SUV, designed for those who dare to move beyond the ordinary.



Styled To Make A Statement

Unapologetically unique, and designed to break through the boring, the Nissan MAGNITE projects confidence from every angle. Distinctive Bi-Projector LED headlamps light the way, while an imposing front grille and Day Time Running Lights ensure you get noticed, for all the right reasons.



A



C

D



B



E

A

Electric Adjust & Folding Mirrors

B

Rear LED Lamp with 3D Honeycomb Effect

C

Dominating Front Grille with Fog Lights

D

Bi-Projector LED Headlamps With LED DRL's

E

16-inch Diamond Cut Two Tone Alloy Wheel Design





A New Standard In Crossover Comfort

The Nissan MAGNITE raises the bar to deliver on a premium interior, throughout. Experience a striking cabin, offering Two Tone Colour Seats with matching Door Trim, for an elevated feel.



Two Tone Interior Leather Quilted Seats with Heat Guard Tech

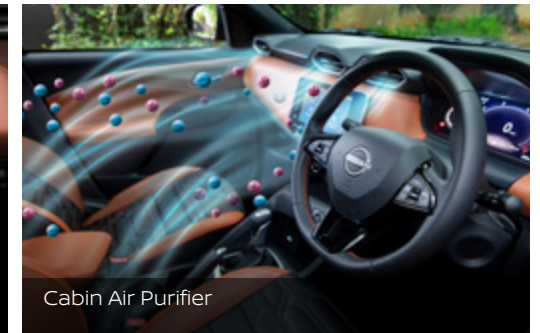
Bold, stylish, unforgettable. The first-in-segment UV-resistant leather seats have been specially designed to offer you better surface heat reflection.

A Cabin That's Crafted To Surprise

The Nissan MAGNITE is nothing like the status-quo; impressing with exciting and unexpected features. Enjoy upgraded finishes and innovative touches, like the distinctive Quilted Seating Patterns and a Leather Steering wheel.



7-inch Advanced Driver Digital Assist Display



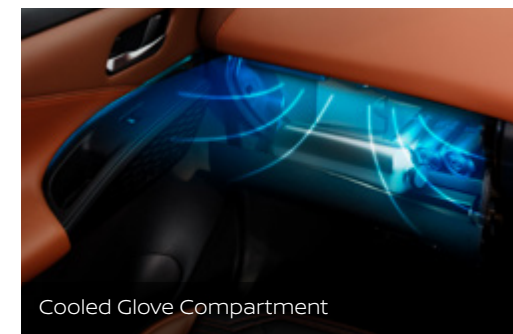
Cabin Air Purifier



Multi-Colour Ambient Lighting



Optional Wireless Charging



Cooled Glove Compartment



Frameless Auto Dimming RVM

FEATURES AND SPECIFICATIONS ARE SUBJECT TO CHANGE DEPENDING ON MARKET AND GRADE. PLEASE CONSULT YOUR LOCAL NISSAN DEALERSHIP FOR MORE INFORMATION.

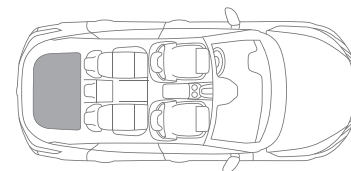


Ready For Any Urban Adventure

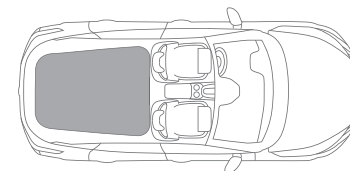
Experience comfort for all in the Nissan MAGNITE, with rear seat passengers enjoying ample leg room of 219mm, with additional comfort provided by Rear Air-Conditioner Vents.

You've got places to go to and people to see. The Nissan MAGNITE offers a host of practical conveniences, for an effortless journey every time. A 3-Way Adjustable Driver Seat and best in-class Front Seat Distancing of 700mm, means you also have the space to be you.

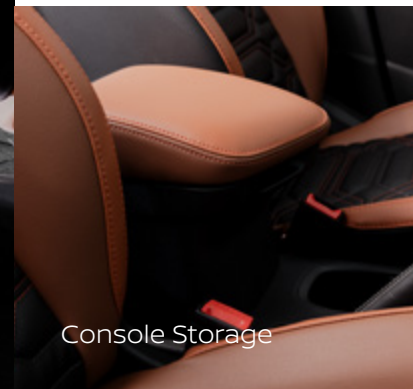
And when your urban adventure takes you a little further from home, the Nissan MAGNITE has ample cabin storage space and a best in-class cargo volume, to take on that road trip comfortably.



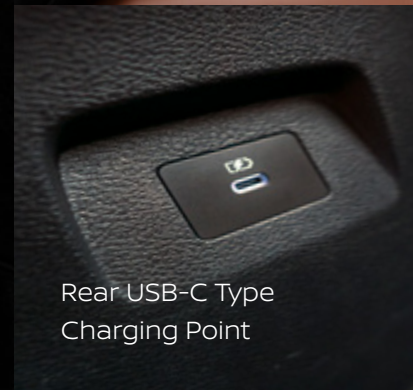
336ℓ Boot Space



690ℓ with Folded Seats



Console Storage



Rear USB-C Type Charging Point



Rear AC Vents

Rear Centre Armrest With Cup & Phone Holders



A Truly Connected-Car Experience

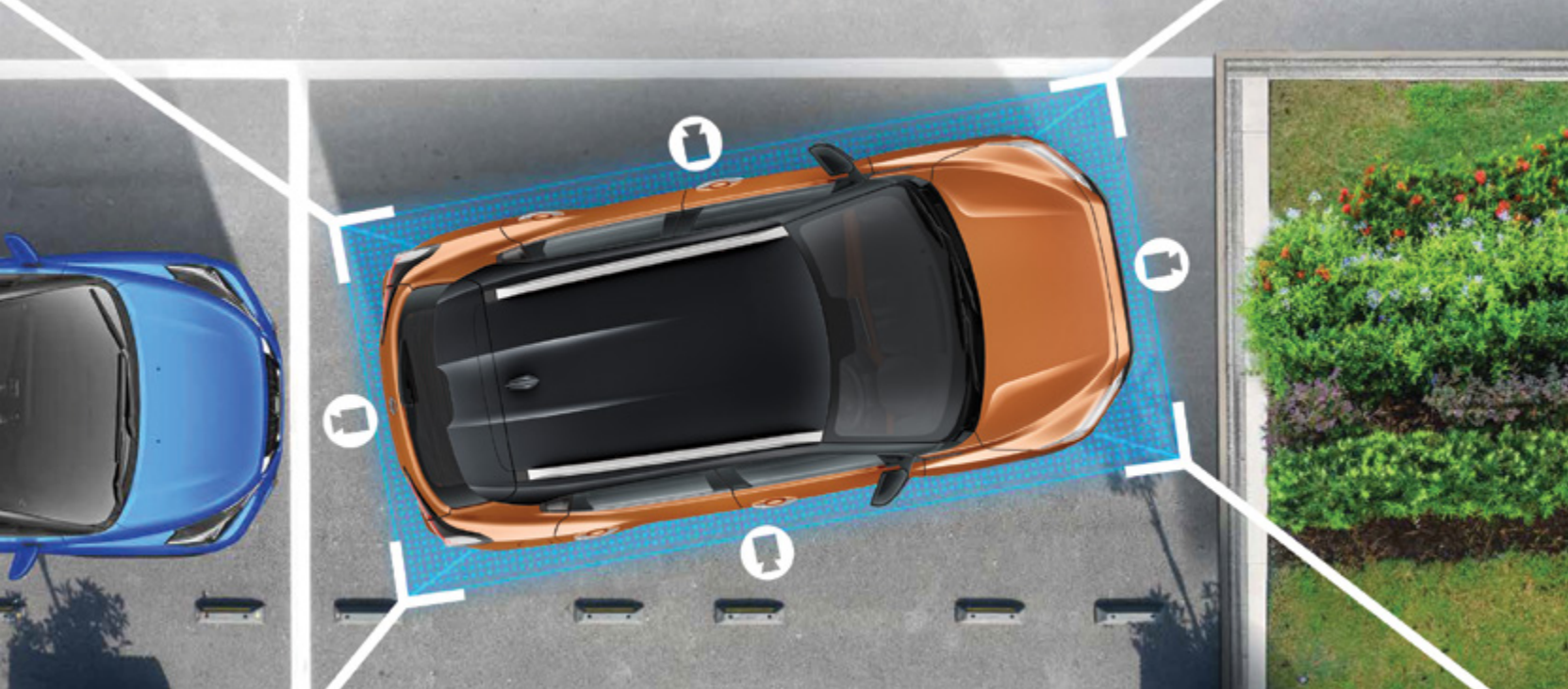
Controlled from the ergonomic Multi-Function Steering Wheel, the Nissan MAGNITE boasts with a high definition, dark themed 7-inch Advanced Digital Drive-Assist Display, offering quick and easy access to all your vehicle information.



Connectivity to
Android Auto™ and Apple CarPlay®

Never miss a beat, a moment or a message when you seamlessly integrate your smartphone into your driving experience, and take your world on the road with you, wherever you go.





Safety Innovation That Thinks Ahead

No matter where your journey takes you, and no matter the driving conditions that you encounter, the Nissan MAGNITE is equipped with On-Road Safety Features to get you there and back, with peace of mind and confidence.

Standard Safety features include:

- 6 Airbags
- Child Door Lock and Isofix
- Speed Sensing Auto Door Lock
- Impact Sensing Unlock



Arrive In Style And Then Park Like A Pro

Around View Monitor technology makes navigating in and out of parking spots, a breeze. Experience a virtual composite 360° Bird's-Eye View, and then select between Split-Screen close-ups of the Front, Rear and Curb Side Views for the ultimate in urban-parking confidence.



Split Screen View



Rear View With Parking Guide Lines



Side Curb View

The Nissan MAGNITE also has the smallest Turning Radius in its class of 5m, making tight-space manoeuvres even easier.

FEATURES AND SPECIFICATIONS ARE SUBJECT TO CHANGE DEPENDING ON MARKET AND GRADE. PLEASE CONSULT YOUR LOCAL NISSAN DEALERSHIP FOR MORE INFORMATION.



Light The Way, Safely

LED Headlamps and Variable Intermittent Wipers will turn on automatically, based on the light and weather conditions.

Then, Auto-Levelizer Headlamps compensate for steep driving angles, automatically adjusting the headlamps without any intervention from the driver.

Move Into The Fast Lane

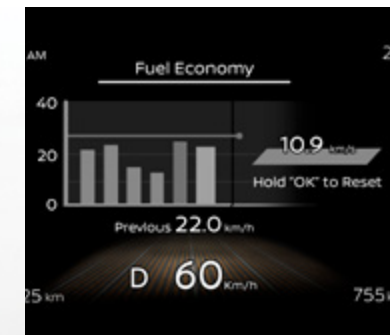


Turbo-Charged Efficiently

A Turbo-Charged 1.0ℓ engine provides all the power for city acceleration, with minimal fuel consumption. Get even more efficiency out of your daily drive, with the onboard MAGNITE Eco Scoring and Coaching.



HR-10 1.0ℓ Turbo Charged Engine



Eco Scoring and Eco Coaching



CVT Gearbox

A Drive To Suit Your Style

Nissan MAGNITE offers a smooth 5-Speed Manual or a seamless CVT Gearbox, so you can switch up gears in a way that works for you.



i-Key Approach Unlock & Walk Away Lock



i-Key Remote Engine Start

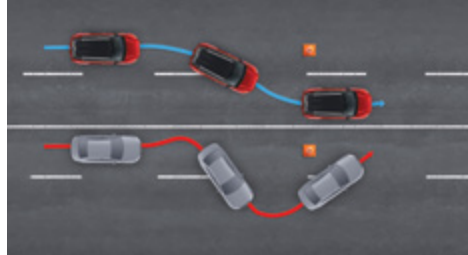
Unlock A New Experience

The new Intelligent Key FOB offers another best in-class feature. Your Nissan MAGNITE will automatically unlock when you are within 1m of the vehicle and can lock it again when you are 1.8m away. You can also start your MAGNITE with the i-Key from a distance up to 60m, for complete control in the palm of your hand.

FEATURES AND SPECIFICATIONS ARE SUBJECT TO CHANGE DEPENDING ON MARKET AND GRADE. PLEASE CONSULT YOUR LOCAL NISSAN DEALERSHIP FOR MORE INFORMATION.

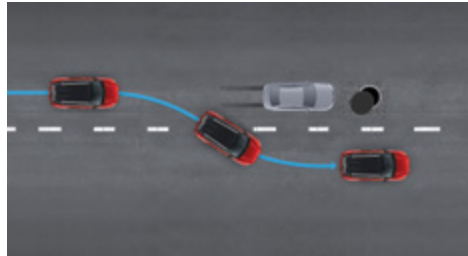
On-Road Safety Features For Total Peace Of Mind

The Nissan MAGNITE is equipped with a range of advanced driver assistance systems designed to enhance safety and improve driving comfort.



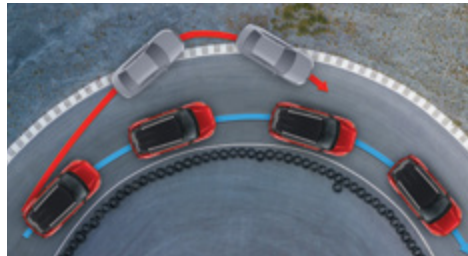
VEHICLE DYNAMIC CONTROL

Equipped with Vehicle Dynamic Control (VDC), the Nissan MAGNITE takes instant control when the road takes an unexpected turn.



ANTI-LOCK BRAKING SYSTEM (ABS) WITH ELECTRONIC BRAKE-FORCE DISTRIBUTION (EBD)

Intuitive safety systems which intervene under extreme braking conditions in unforeseen situations.



TRACTION CONTROL

MAGNITE'S Traction Control System (TCS) applies maximum control in situations where grip can easily be lost. Handle loose sand and slippery wet roads with ease.



HILL START ASSIST

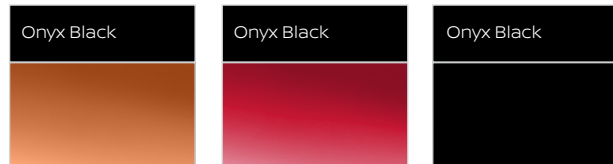
In the Nissan MAGNITE there's never an uphill battle. Hill Start Assist (HSA) ensures your climb to the top is steady and sure, without any roll-back.



EXTERIOR PAINT COLOUR SCHEMES



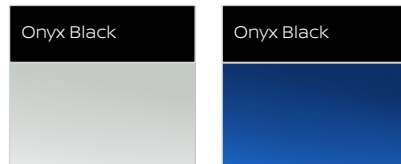
Dual Tone



Sunrise Copper Orange

Flare Garnet Red

Onyx Black



Pearl White

Vivid Blue

Monotone



Sunrise Copper Orange

Flare Garnet Red

Onyx Black

Blade Silver



Pearl White

Vivid Blue

Metallic Grey

INTERIOR UPHOLSTERY OPTIONS



Cloth

Leather two tone

VISIA

- 6 Airbags (Front, Side & Curtain)
- VDC (Vehicle Dynamic Control)
- Rear Parking Sensors
- TPMS (Tyre Pressure Monitoring System)
- Electric Adjust & Electric Folding Outside Mirror
- Child Lock + Speed Sensing Lock
- Impact Sensing Unlock
- Steering Wheel Controls (Audio + Tel)
- Auto Air-Conditioner
- Shark Fin Antenna
- 16-inch Steel Wheel + Cover (Tyre: 195/60R16)
- Roof Rails
- No Audio (w/pre-wiring) + 6 Speakers

ACENTA

In Addition to VISIA

- Display Audio + Apple CarPlay® / Android Auto™
- Frameless Auto Dimming Rear View Mirror
- Front Fog Lamp (LED)
- LED Daytime Running Lights
- Rear View Camera
- Approach Unlock + Walk Away Lock
- Keyless Engine Start / Stop
- 7-inch Advanced Digital Drive-Assist Display
- 16-inch Alloy Wheel (Two Tone Design)
- Air Purifier
- LED Headlamps

ACENTA+

In Addition to ACENTA

- Remote Engine Starter (HR-10 Only)
- Around View Monitor (AVM)
- Ambient lighting
- Two Tone Leather Seats
- Leather Steering Wheel
- Cruise Control with Auto Speed Control Device
- Cooled Glovebox



FEATURES AND SPECIFICATIONS ARE SUBJECT TO CHANGE DEPENDING ON MARKET AND GRADE. PLEASE CONSULT YOUR LOCAL NISSAN DEALERSHIP FOR MORE INFORMATION.

Nissan MAGNITE

Specifications & Features

| | BR-10 | | | | |
|---------------------------------------|-------------|---|---|---|---|
| MODEL | | 1.0 Visia 5MT | 1.0 Acenta 5MT | 1.0 Visia AMT | 1.0 Acenta AMT |
| Seating Capacity | | 5 | 5 | 5 | 5 |
| ENGINE | | | | | |
| Engine Displacement | cc | 999 | 999 | 999 | 999 |
| Number of Cylinders | | 3 | 3 | 3 | 3 |
| Maximum Power | kw @ rpm | 53 @ 6250 | 53 @ 6250 | 53 @ 6250 | 53 @ 6250 |
| Maximum Torque | Nm @ rpm | 96 @ 3500 | 96 @ 3500 | 96 @ 3500 | 96 @ 3500 |
| Top Speed | km/h | 150 | 150 | - | - |
| Fuel Type | | Petrol | Petrol | Petrol | Petrol |
| Fuel Tank Capacity | ℓ | 40 | 40 | 40 | 40 |
| Fuel Consumption: Combined | ℓ/100km | 5,90 | 5,90 | 5,90 | 5,90 |
| Push Start Button | | - | Standard | - | Standard |
| CO2 Emissions - Combined | g/km | 140,15 | 140,15 | 140,15 | 140,15 |
| Emissions Level | | - | - | - | - |
| TRANSMISSION & DRIVE TRAIN | | | | | |
| Transmission | | 5-Speed Manual | 5-Speed Manual | AMT | AMT |
| Gear Ratio | 1st | 4,091 | 4,091 | 4,091 | 4,091 |
| | 2nd | 2,263 | 2,263 | 2,611 | 2,611 |
| | 3rd | 1,393 | 1,393 | 1,704 | 1,704 |
| | 4th | 1,081 | 1,081 | 1,081 | 1,081 |
| | 5th | 0,791 | 0,791 | 0,744 | 0,744 |
| | Reverse | 3,550 | 3,550 | 3,546 | 3,546 |
| | Final Drive | 4,920 | 4,920 | 4,923 | 4,923 |
| Driven Wheels | | 2WD | 2WD | 2WD | 2WD |
| CHASSIS | | | | | |
| Suspension Front | | MacPherson Strut with Lower Transverse Link | MacPherson Strut with Lower Transverse Link | MacPherson Strut with Lower Transverse Link | MacPherson Strut with Lower Transverse Link |
| Suspension Rear | | Twin Tube Telescopic Shock Absorber | Twin Tube Telescopic Shock Absorber | Twin Tube Telescopic Shock Absorber | Twin Tube Telescopic Shock Absorber |
| Stabilizer Bar | | Standard | Standard | Standard | Standard |
| WEIGHTS & DIMENSIONS | | | | | |
| Gross Vehicle Mass (GVM) | kg | 1397 | 1397 | 1397 | 1397 |
| Overall Length | mm | 3995 | 3995 | 3995 | 3995 |
| Overall Width Without Mirrors | mm | 1758 | 1758 | 1758 | 1758 |
| Overall Height (Unladen) | mm | 1571 | 1571 | 1571 | 1571 |
| Wheelbase | mm | 2500 | 2500 | 2500 | 2500 |
| Track (Tread): Front / Rear | mm | 1536/1535 | 1536/1535 | 1536/1535 | 1536/1535 |
| Overhang: Front / Rear | mm | 787/707 | 787/707 | 787/707 | 787/707 |
| Ground Clearance | mm | 205 | 205 | 205 | 205 |
| Turning Radius (Curb To Curb) | m | 5 | 5 | 5 | 5 |
| Maximum Roof Load | kg | 50 | 50 | 50 | 50 |
| Luggage Capacity VDA | ℓ | 336 | 336 | 336 | 336 |
| WHEELS & TYRES | | | | | |
| Wheel Size & Type | | 16-inch Steel | 16-inch Machined Alloy Two Tone | 16-inch Steel | 16-inch Machined Alloy Two Tone |
| Wheel Dimensions | | 195/60R16 | 195/60R16 | 195/60R16 | 195/60R16 |
| Spare Tyre | | Full Size | Full Size | Full Size | Full Size |

Nissan MAGNITE

Specifications & Features

| | HR-10 | | | | |
|---------------------------------------|---|---|---|---|---|
| | 1.0 Acenta Plus AMT | 1.0T Visia 5MT | 1.0T Acenta 5MT | 1.0T Acenta CVT | 1.0T Acenta Plus CVT |
| Seating Capacity | 5 | 5 | 5 | 5 | 5 |
| ENGINE | | | | | |
| Engine Displacement | 999 | 999 | 999 | 999 | 999 |
| Number of Cylinders | 3 | 3 | 3 | 3 | 3 |
| Maximum Power | 53 @ 6250 | 74 @ 5000 | 74 @ 5000 | 74 @ 5000 | 74 @ 5000 |
| Maximum Torque | 96 @ 3500 | 160 @ 2800-3600 | 160 @ 2800-3600 | 152 @ 2200-4400 | 152 @ 2200-4400 |
| Top Speed | - | 173 | 173 | 168 | 168 |
| Fuel Type | Petrol | Petrol | Petrol | Petrol | Petrol |
| Fuel Tank Capacity | 40 | 40 | 40 | 40 | 40 |
| Fuel Consumption: Combined | 5,90 | 5,27 | 5,27 | 6,00 | 6,00 |
| Push Start Button | Standard | - | Standard | Standard | Standard |
| CO2 Emissions - Combined | 140,15 | 125,49 | 125,49 | 142,42 | 142,42 |
| Emissions Level | - | - | BS6 (EUR5) | BS6 (EUR5) | BS6 (EUR5) |
| TRANSMISSION & DRIVE TRAIN | | | | | |
| Transmission | AMT | 5-Speed Manual | 5-Speed Manual | CVT | CVT |
| Gear Ratio | 4,091 | 3,727 | 3,727 | 4,006 - 0,5500 | 4,006 - 0,5500 |
| | 2,611 | 1,957 | 1,957 | - | - |
| | 1,704 | 1,233 | 1,233 | - | - |
| | 1,081 | 0,903 | 0,903 | - | - |
| | 0,744 | 0,689 | 0,689 | - | - |
| | 3,546 | 3,546 | 3,546 | 3,771 | 3,771 |
| | 4,923 | 4,214 | 4,214 | 3,754 | 3,754 |
| Driven Wheels | 2WD | 2WD | 2WD | 2WD | 2WD |
| CHASSIS | | | | | |
| Suspension Front | MacPherson Strut with Lower Transverse Link | MacPherson Strut with Lower Transverse Link | MacPherson Strut with Lower Transverse Link | MacPherson Strut with Lower Transverse Link | MacPherson Strut with Lower Transverse Link |
| Suspension Rear | Twin Tube Telescopic Shock Absorber | Twin Tube Telescopic Shock Absorber | Twin Tube Telescopic Shock Absorber | Twin Tube Telescopic Shock Absorber | Twin Tube Telescopic Shock Absorber |
| Stabilizer Bar | Standard | Standard | Standard | Standard | Standard |
| WEIGHTS & DIMENSIONS | | | | | |
| Gross Vehicle Mass (GVM) | 1397 | 1397 | 1397 | 1397 | 1397 |
| Overall Length | 3995 | 3995 | 3995 | 3995 | 3995 |
| Overall Width Without Mirrors | 1758 | 1758 | 1758 | 1758 | 1758 |
| Overall Height (Unladen) | 1571 | 1571 | 1571 | 1571 | 1571 |
| Wheelbase | 2500 | 2500 | 2500 | 2500 | 2500 |
| Track (Tread): Front / Rear | 1536/1535 | 1536/1535 | 1536/1535 | 1536/1535 | 1536/1535 |
| Overhang: Front / Rear | 787/707 | 787/707 | 787/707 | 787/707 | 787/707 |
| Ground Clearance | 205 | 205 | 205 | 205 | 205 |
| Turning Radius (Curb To Curb) | 5 | 5 | 5 | 5 | 5 |
| Maximum Roof Load | 50 | 50 | 50 | 50 | 50 |
| Luggage Capacity VDA | 336 | 336 | 336 | 336 | 336 |
| WHEELS & TYRES | | | | | |
| Wheel Size & Type | 16-inch Machined Alloy Two Tone | 16-inch Steel | 16-inch Machined Alloy Two Tone | 16-inch Machined Alloy Two Tone | 16-inch Machined Alloy Two Tone |
| Wheel Dimensions | 195/60R16 | 195/60R16 | 195/60R16 | 195/60R16 | 195/60R16 |
| Spare Tyre | Full Size | Full Size | Full Size | Full Size | Full Size |

Nissan MAGNITE

Specifications & Features

| | BR-10 | | | |
|--|---------------------------------|--|---------------------------------|--|
| MODEL | 1.0 Visia 5MT | 1.0 Acenta 5MT | 1.0 Visia AMT | 1.0 Acenta AMT |
| EXTERIOR | | | | |
| Front & Rear Bumper: Body Colour | Standard | Standard | Standard | Standard |
| Exterior Door Mirror | Body Colour | Body Colour | Body Colour | Body Colour |
| Electric Adjustable Door Mirror | Electric Fold + Electric Adjust | Electric Fold + Electric Adjust | Electric Fold + Electric Adjust | Electric Fold + Electric Adjust |
| Exterior Door Handle | Chrome | Chrome | Chrome | Chrome |
| Headlamp Type | Halogen | LED | Halogen | LED |
| Headlight Levelizer System | Manual | Auto | Manual | Auto |
| Signature LED Daytime Running Lights | - | Standard | - | Standard |
| Front Wiper | Variable Intermittent | Variable Intermittent | Variable Intermittent | Variable Intermittent |
| Rear Wiper | Standard | Standard | Standard | Standard |
| LED Front Fog Lights | - | Standard | - | Standard |
| Rear Roof Spoiler | Standard | Standard | Standard | Standard |
| COMFORT AND CONVENIENCE | | | | |
| Seat Upholstery | Cloth | Cloth | Cloth | Cloth |
| Manual 2-Way Driver Seat Adjustment | Standard | - | Standard | - |
| Manual 3-Way Driver Seat Adjustment | - | Standard | - | Standard |
| Manual 2-Way Passenger Seat Adjustment | Standard | Standard | Standard | Standard |
| 60:40 Rear Seat Split | Standard | Standard | Standard | Standard |
| 7-inch TFT Advanced Drive-Assist Display | - | Standard | - | Standard |
| Manual Anti-Dazzle Rear View Mirror | Standard | - | Standard | - |
| Frameless Auto Dimming Rear View Mirror | - | Standard | - | Standard |
| Ambient Lighting | - | - | - | - |
| Outside Thermometer | Standard | Standard | Standard | Standard |
| Cruise Control + Adjustable Speed Limiter | - | - | - | - |
| Steering Wheel Material | Urethane | Urethane | Urethane | Urethane |
| Shift Lever | Urethane | Urethane | Urethane with Chrome | Urethane with Chrome |
| Electric Power Steering (EPS) | Standard | Standard | Standard | Standard |
| Manual Tilt Steering Wheel Adjustment | Standard | Standard | Standard | Standard |
| Front & Rear Electric Windows | Standard | Standard | Standard | Standard |
| Remote Central Locking | Standard | Standard | Standard | Standard |
| Smart Entry (i-Key) with Push Start System | - | Standard | - | Standard |
| Remote Engine Starter | - | - | - | - |
| Audio System | With Pre-Wiring | 8-inch Display Audio (AM/ FM+RDS+USB+BT+WIFI+VR +Apple Carplay+Android Auto) | With Pre-Wiring | 8-inch Display Audio (AM/ FM+RDS+USB+BT+WIFI+VR +Apple Carplay+Android Auto) |
| Number of Speakers | 6 | 6 | 6 | 6 |
| Handsfree Bluetooth Connectivity | - | Standard | - | Standard |
| Steering Wheel Controls | Standard | Standard | Standard | Standard |
| Front Cup Holder | Standard | Standard | Standard | Standard |
| Rear Cup Holders | - | Standard | - | Standard |
| Air-Conditioner | Auto | Auto | Auto | Auto |
| Air Purifier | - | Standard | - | Standard |
| Cooled Glovebox | - | - | - | - |
| Tyre Pressure Monitoring System | Standard | Standard | Standard | Standard |
| 12V Power Socket | Front Centre Console | Front Centre Console | Front Centre Console | Front Centre Console |

Nissan MAGNITE

Specifications & Features

| | HR-10 | | | | |
|--|--|---------------------------------|--|--|--|
| MODEL | 1.0 Acenta Plus AMT | 1.0T Visia 5MT | 1.0T Acenta 5MT | 1.0T Acenta CVT | 1.0T Acenta Plus CVT |
| EXTERIOR | | | | | |
| Front & Rear Bumper: Body Colour | Standard | Standard | Standard | Standard | Standard |
| Exterior Door Mirror | Body Colour | Body Colour | Body Colour | Body Colour | Body Colour |
| Electric Adjustable Door Mirror | Electric Fold + Electric Adjust | Electric Fold + Electric Adjust | Electric Fold + Electric Adjust | Electric Fold + Electric Adjust | Electric Fold + Electric Adjust |
| Exterior Door Handle | Chrome | Chrome | Chrome | Chrome | Chrome |
| Headlamp Type | LED | Halogen | LED | LED | LED |
| Headlight Levelizer System | Auto | Manual | Auto | Auto | Auto |
| Signature LED Daytime Running Lights | Standard | - | Standard | Standard | Standard |
| Front Wiper | Variable Intermittent | Variable Intermittent | Variable Intermittent | Variable Intermittent | Variable Intermittent |
| Rear Wiper | Standard | Standard | Standard | Standard | Standard |
| LED Front Fog Lights | Standard | - | Standard | Standard | Standard |
| Rear Roof Spoiler | Standard | Standard | Standard | Standard | Standard |
| COMFORT AND CONVENIENCE | | | | | |
| Seat Upholstery | Leather Two Tone | Cloth | Cloth | Cloth | Leather Two Tone |
| Manual 2-Way Driver Seat Adjustment | - | Standard | - | - | - |
| Manual 3-Way Driver Seat Adjustment | Standard | - | Standard | Standard | Standard |
| Manual 2-Way Passenger Seat Adjustment | Standard | Standard | Standard | Standard | Standard |
| 60:40 Rear Seat Split | Standard | Standard | Standard | Standard | Standard |
| 7-inch TFT Advanced Drive-Assist Display | Standard | - | Standard | Standard | Standard |
| Manual Anti-Dazzle Rear View Mirror | - | Standard | - | - | - |
| Frameless Auto Dimming Rear View Mirror | Standard | - | Standard | Standard | Standard |
| Ambient Lighting | - | - | - | Standard | Standard |
| Outside Thermometer | Standard | Standard | Standard | Standard | Standard |
| Cruise Control + Adjustable Speed Limiter | - | - | Standard | Standard | Standard |
| Steering Wheel Material | Leather | Urethane | Urethane | Urethane | Leather |
| Shift Lever | Urethane with Chrome | Urethane | Urethane | Urethane | Urethane |
| Electric Power Steering (EPS) | Standard | Standard | Standard | Standard | Standard |
| Manual Tilt Steering Wheel Adjustment | Standard | Standard | Standard | Standard | Standard |
| Front & Rear Electric Windows | Standard | Standard | Standard | Standard | Standard |
| Remote Central Locking | Standard | Standard | Standard | Standard | Standard |
| Smart Entry (i-Key) with Push Start System | Standard | - | Standard | Standard | Standard |
| Remote Engine Starter | - | - | - | - | Standard |
| Audio System | 8-inch Display Audio (AM/ FM+RDS+USB+BT+WIFI+VR +Apple Carplay+Android Auto) | With Pre-Wiring | 8-inch Display Audio (AM/ FM+RDS+USB+BT+WIFI+VR +Apple Carplay+Android Auto) | 8-inch Display Audio (AM/ FM+RDS+USB+BT+WIFI+VR +Apple Carplay+Android Auto) | 8-inch Display Audio (AM/ FM+RDS+USB+BT+WIFI+VR +Apple Carplay+Android Auto) |
| Number of Speakers | 6 | 6 | 6 | 6 | 6 |
| Handsfree Bluetooth Connectivity | Standard | - | Standard | Standard | Standard |
| Steering Wheel Controls | Standard | Standard | Standard | Standard | Standard |
| Front Cup Holder | Standard | Standard | Standard | Standard | Standard |
| Rear Cup Holders | Standard | Standard | Standard | Standard | Standard |
| Air-Conditioner | Auto | Auto | Auto | Auto | Auto |
| Air Purifier | Standard | - | Standard | Standard | Standard |
| Cooled Glovebox | Standard | - | - | - | Standard |
| Tyre Pressure Monitoring System | Standard | Standard | Standard | Standard | Standard |
| 12V Power Socket | Front & Rear Centre Console | Front Centre Console | Front Centre Console | Front Centre Console | Front & Rear Centre Console |

Nissan MAGNITE

Specifications & Features

| | BR-10 | | | |
|---|---------------|----------------|---------------|----------------|
| MODEL | 1.0 Visia 5MT | 1.0 Acenta 5MT | 1.0 Visia AMT | 1.0 Acenta AMT |
| SAFETY AND SECURITY | | | | |
| Dual Front, Side & Curtain Airbags | Standard | Standard | Standard | Standard |
| 3 Point Driver Seat Belts with Pretensioner & Load limiter | Standard | Standard | Standard | Standard |
| 3 Point Passenger Seat Belts with Pretensioner & Load limiter | Standard | Standard | Standard | Standard |
| Rear Seat Belt (ELR) | Standard | Standard | Standard | Standard |
| Anti-Lock Braking System (ABS) | Standard | Standard | Standard | Standard |
| Electronic Brake-Force Distribution (EBD) | Standard | Standard | Standard | Standard |
| Hydraulic Brake Assist (HBA) | Standard | Standard | Standard | Standard |
| Vehicle Dynamic Control (VDC) | Standard | Standard | Standard | Standard |
| Traction Control System | - | - | - | - |
| Hill Start Assist (HSA) | Standard | Standard | Standard | Standard |
| Approach Unlock + Walk Away Lock | Standard | Standard | Standard | Standard |
| ISOFIX Child Seat Anchorage | Standard | Standard | Standard | Standard |
| Immobiliser + Alarm | Standard | Standard | Standard | Standard |
| Rear Parking Camera | - | Standard | - | Standard |
| Around View Monitor | - | - | - | - |
| Rear Parking Sensors | Standard | Standard | Standard | Standard |

Nissan's commitment to quality: To provide all customers with a consistently high level of quality, Nissan applies the same standards worldwide, to ensure that all Nissan owners enjoy peace of mind for the lives of their vehicles. The approach is based on quality from the customer's perspective on three key elements: First, the expectation of a smooth driving experience with complete peace of mind. Second, the intangible appeal of a vehicle, its power to captivate and excite, with features that capture attention and imagination. Third, the level of attentiveness and service during the sales process, and long after the sale is concluded.

Legal notice: Every effort has been made to ensure that the contents of this brochure is correct at the time of going to print (November 2024). This brochure may be produced featuring prototype or accessorised vehicles exhibited at motor shows and in accordance with the company's policy of continuously improving its products. Nissan South Africa reserves the right to change the specifications, and the vehicles described and shown in this brochure at any time. Nissan dealers will be informed of any such modifications as quickly as possible. Please check with your local Nissan dealer to receive the most up-to-date information. Due to the limitations of the printing process used, the colours shown in this brochure may differ slightly from the actual colours of the paint and interior trim material used. All rights reserved. Reproduction in whole or part of this brochure without the written permission from Nissan is forbidden. Nissan dealers will be informed of any such modifications as quickly as possible. Please check with your local Nissan dealer to receive the most up-to-date information.

Features and specifications are subject to change depending on market and grade. Please consult your local Nissan Dealership for more information.

Nissan MAGNITE

Specifications & Features

| | HR-10 | | | | |
|----------|---------------------|----------------|-----------------|-----------------|----------------------|
| MODEL | 1.0 Acenta Plus AMT | 1.0T Visia 5MT | 1.0T Acenta 5MT | 1.0T Acenta CVT | 1.0T Acenta Plus CVT |
| Standard | Standard | Standard | Standard | Standard | Standard |
| Standard | Standard | Standard | Standard | Standard | Standard |
| Standard | Standard | Standard | Standard | Standard | Standard |
| Standard | Standard | Standard | Standard | Standard | Standard |
| Standard | Standard | Standard | Standard | Standard | Standard |
| Standard | Standard | Standard | Standard | Standard | Standard |
| Standard | - | Standard | Standard | Standard | Standard |
| Standard | Standard | Standard | Standard | Standard | Standard |
| - | - | Standard | Standard | Standard | Standard |
| Standard | Standard | Standard | Standard | Standard | Standard |
| Standard | Standard | Standard | Standard | Standard | Standard |
| Standard | Standard | Standard | Standard | Standard | Standard |
| Standard | Standard | Standard | Standard | Standard | Standard |
| - | - | Standard | Standard | Standard | - |
| Standard | - | - | - | - | Standard |
| Standard | Standard | Standard | Standard | Standard | Standard |

AT NISSAN WE KEEP OUR PROMISES AND TAKE CARE OF OUR FAMILY

Servicing and repairing your Nissan at an authorised Nissan dealership is the way to go. Our Nissan technicians are highly trained specialists that know your Nissan better than anyone. They will use Genuine Nissan Parts, Genuine Nissan Accessories to ensure quality, reliability and to keep your vehicle performing to optimum standards. Nissan aims to keep you and your vehicle on the road with total peace of mind - for as long as possible. That is the Nissan Aftersales commitment.



Nissan's commitment to the environment

Nissan's environmental philosophy embraces people, vehicles and nature. In the pursuit of a sustainable mobile society, the Nissan Green Program aims to reduce the environmental impact of Nissan vehicles at every stage of the vehicle life cycle, while corporate activities address environmental challenges.

CUSTOMER SERVICE PROMISE



Service with Value



Service with Trust



Sustainable Future

NISSAN



Visit our website at: www.nissanafrica.com